

Technical data

Possible Robot Configurations

Degrees of Freedom	1 to 8
Payload	up to 88.18 lb at 43.30 in (see configuration diagram for examples)
Reach	7.87 in - up to 82.67 in at 35.27 lb (see configuration diagram for examples)
Repeatability	± 3.94 mil
Max. Velocity	6.56 ft/s; depending on module selection
Floor Space	9.44 in x 9.44 in; can be mounted horizontally, vertically and on the ceiling
Power Consumption	approx. 250W nominal; depending on module selection
Noise Level	comparatively silent
Surface Material	Aluminium, PC/ABS
Ambient Temperature	32°F to 122°F
Conformity	DIN EN ISO 10218-1; DIN EN ISO 13849-1, PL d, Cat. 3

Control Unit

Dimensions	L 15.75 in, W 8.27 in, H 11.81 in
Operating Voltage	100-240V AC / 50-60Hz; alternatively 48V DC
Protection Class	IP 54
Interfaces	28x digital I/O, Ethernet, Modbus TCP, ProfiNET
Development Interfaces	Web API, ROS2, Streaming
Programming	Intuitive graphical user interface in web browser or on 12" operating panel with mounting device

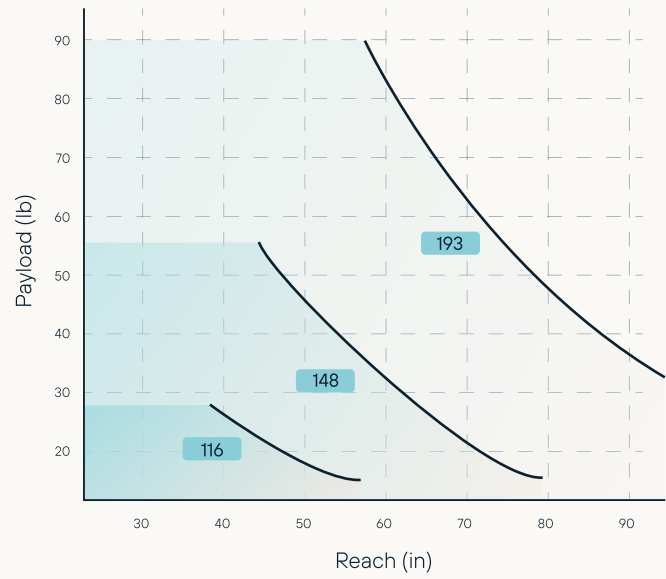
Drive Modules

	S (D86)	M (D116)	L (D148)	XL (D193)
Diameter	3.38 in	4.57 in	5.83 in	7.60 in
Nominal Torque	51 Nm	140 Nm	281 Nm	638 Nm
Max. Torque	70 Nm	204 Nm	433 Nm	1200 Nm
Rated Power	102 W	220 W	441 W	501 W
Max. Velocity	230°/s	180°/s	180°/s	90°/s
Protection Class	IP 54	IP 54	IP 54	IP 54
Working Range	± 270°	± 270°	± 270°	± 270°

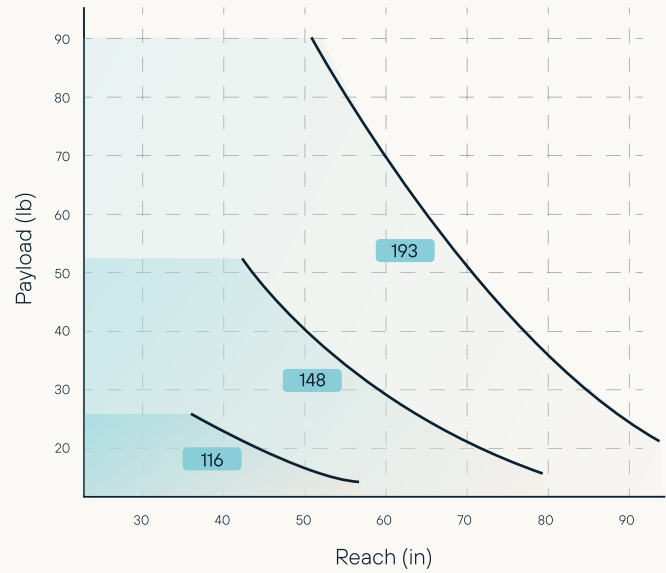
Link Modules

	3.38	4.57	5.83	7.60
Diameter (in)	3.38	4.57	5.83	7.60
I-Type Lengths (in)	7.87, 11.81, 15.75	11.81, 17.72, 23.62, 29.52	15.75, 23.62, 31.50, 39.37	-
L-Type Lengths (in)	9.45, 13.39, 17.32	13.78, 19.69, 25.59, 31.50	18.50, 26.37, 34.25, 42.13	25.59, 31.50, 37.40, 43.31
Available Shapes	Straight or angled (e.g. I86-300: Straight link module with 3.38 in diameter and 11.81 in length or L148-870: Right-angled link module with 5.83 in diameter and 34.25 in length)			
Protection Class	IP 54			

4 degrees of freedom



5 degrees of freedom



6 degrees of freedom

